

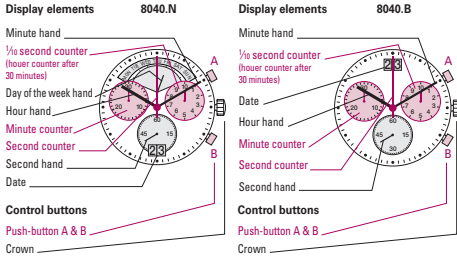
You have decided to buy a watch, which was assembled by a watchmaker using a Ronda movement. Please note that no watches are produced or distributed under the Ronda Brand.

In case of repairs, guarantee claims and questions concerning the functioning of a watch, purchasers and consumers should contact their retailer or the watch manufacturer, for which the relevant information can be found in the sales or guarantee documentation provided with the watch.



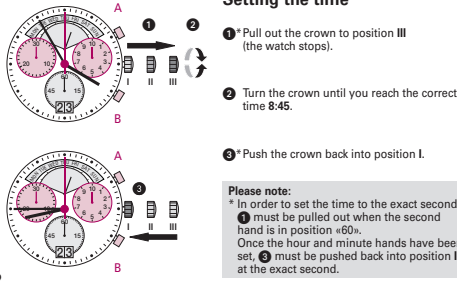
WWW.COVERWATCHES.COM

**Description of the display and control buttons**



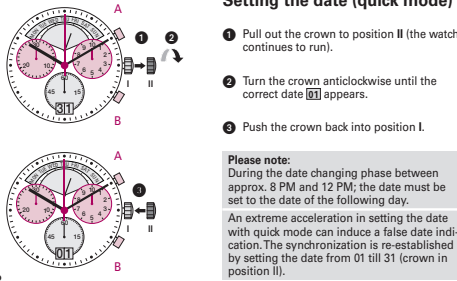
01

**Setting the time**



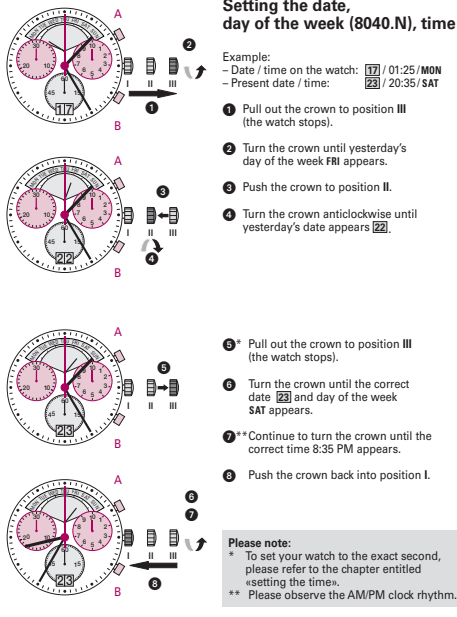
02

**Setting the date (quick mode)**



03

**Setting the date, day of the week (8040.N), time**



04

**Chronograph: Basic function**

(Start / Stop / Reset)  
Example:  
1 Start: Press push-button A.  
2 Stop: to stop the timing, press push-button A once more and read the chronograph counters:  
4 min / 38 sec / 7/8 sec  
3 Zero positioning: Press push-button B. (The chronograph hands will be reset to their zero positions.)

05

**Chronograph: Accumulated timing**

Example:  
1 Start: (start timing)  
2 Stop: (e.g. 15 min 5 sec following 1)  
3 Restart: (timing is resumed)  
4 Stop: (e.g. 5 min 12 sec following 3) = 20 min 17 sec (The accumulated measured time is shown)  
5 Reset: The chronograph hands are returned to their zero positions.  
Please note:  
\* Following 4, the accumulation of the timing can be continued by pressing push-button A (Restart / Stop, Restart / Stop, ...).

06

**Chronograph: Intermediate or interval timing**

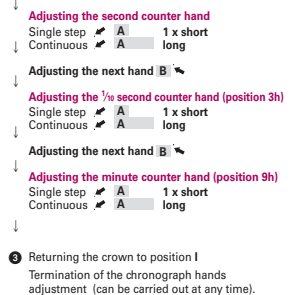
Example:  
1 Start: (start timing)  
2 Display interval: (e.g. 20 minutes 17 seconds (timing continues in the background)  
3 Making up the measured time: (the chronograph hands are quickly advanced to the ongoing measured time.)  
4 Stop: (Final time is displayed)  
5 Reset: The chronograph hands are returned to their zero position.  
Please note:  
\* Following 3, further intervals or intermediates can be displayed by pressing push-button B (display interval / make up measured time, ...).

07

**Adjusting the chronograph hands to zero position**

Example:  
One or several chronograph hands are not in their correct zero positions and have to be adjusted (e.g. following a battery change).  
1 Pull out the crown to position III (all chronograph hands are in their correct or incorrect zero position.)  
2 Keep push-buttons A and B depressed simultaneously for at least 2 seconds (the second counter hand rotates by 360° → corrective mode is activated.)

08



Battery type: 395 (diameter 9.5 mm x 2.6 mm / SR 927 SW)  
Accuracy: +20 / -10 seconds per month

04/2014

